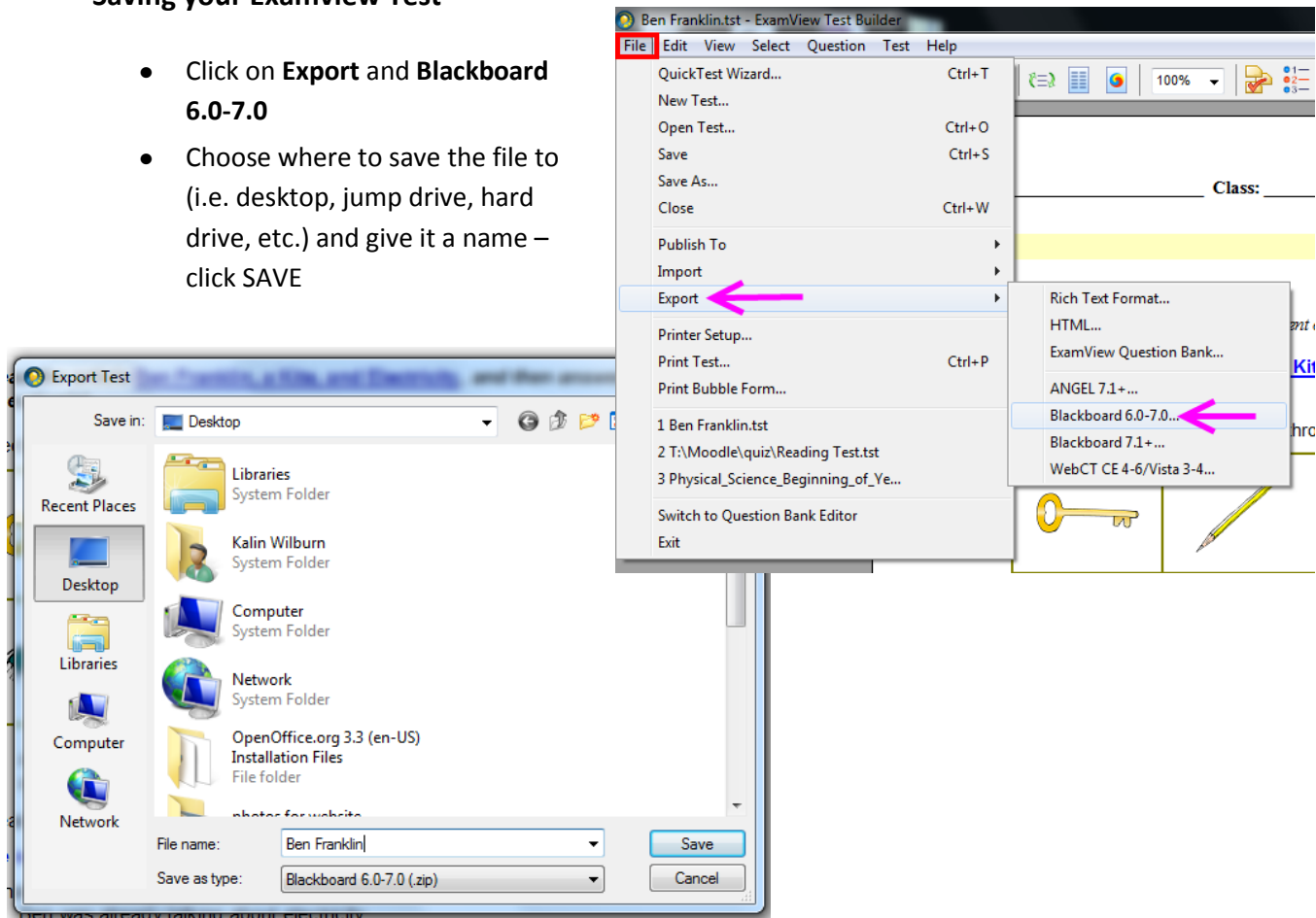


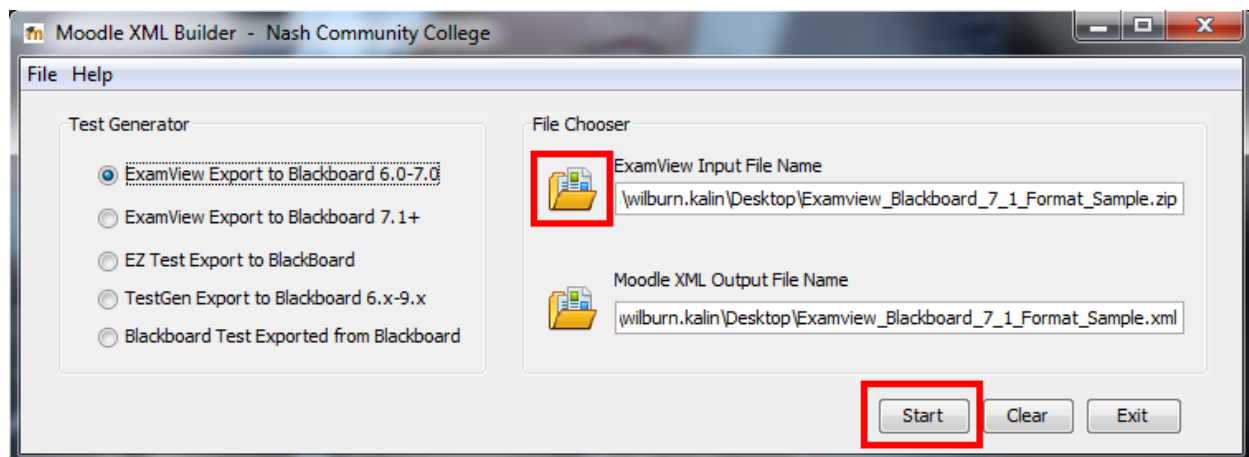
Adding Examview Questions to your Moodle Course

Saving your Examview Test

- Click on **Export** and **Blackboard 6.0-7.0**
- Choose where to save the file to (i.e. desktop, jump drive, hard drive, etc.) and give it a name – click **SAVE**



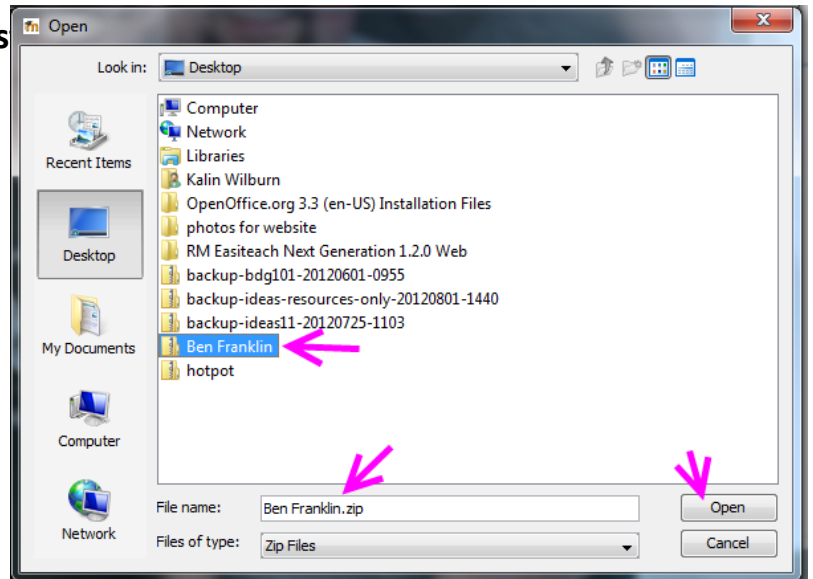
Go to: http://www.nashcc.edu/index.php?option=com_content&task=view&id=657 – to download the Moodle XML Builder



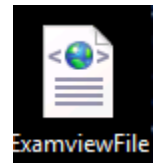
- Make sure you have **EXAMVIEW EXPORT TO BLACKBOARD 6.0-7.0** selected

Adding Examview Questions

- Click on the **file folder icon** under **FILE CHOOSER**
- Locate the file you want to convert into XML format – click **OPEN**
- You will see it populate the input file name and output file name boxes in the XML builder box
- Click **START**

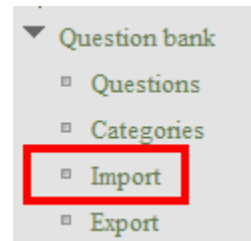


It should only take a few seconds to finish. When it is done you will notice your file will change in appearance and format. →

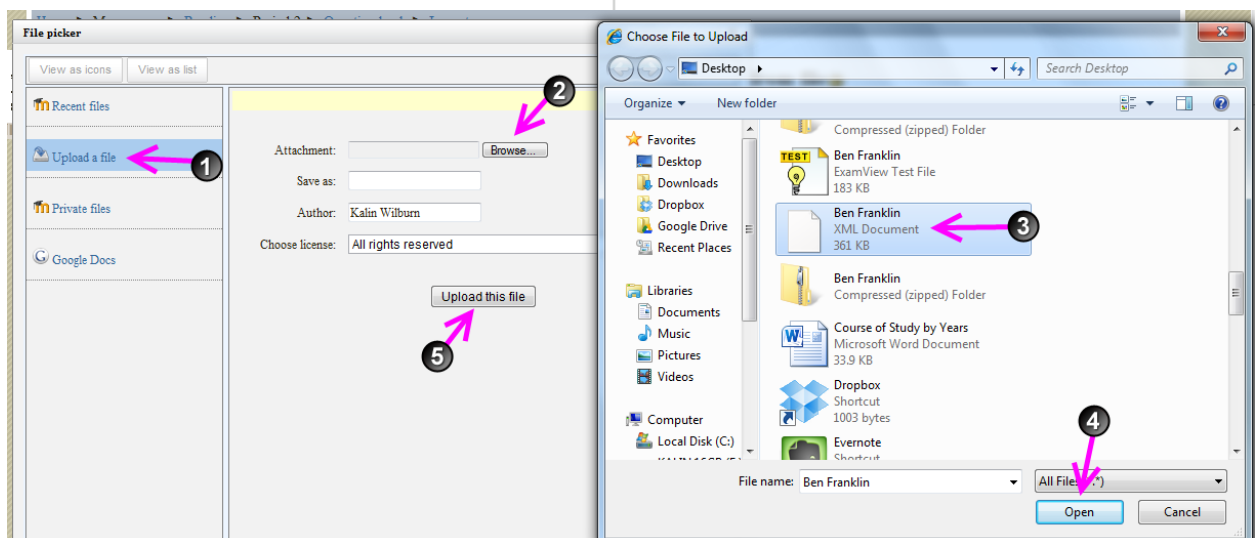
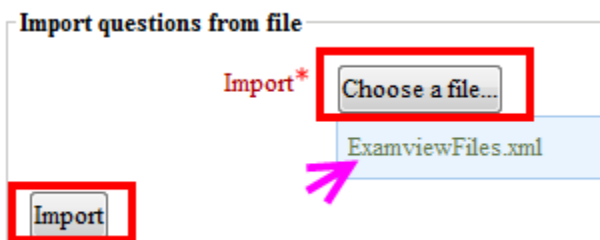


Go into your Moodle course

- Under the **SETTINGS** Block click on **Question Bank**
- Click on **IMPORT**
- Click on **MOODLE XML FORMAT**



- Towards the bottom click on **CHOOSE A FILE** and locate the file you just saved (MAKE SURE IT IS THE XML FORMATTED FILE)
- Click **IMPORT**



- It will show you how many questions are being imported from the file

1. "Freedom of [people] under government is to have a standing rule to live by . . . made by the legislative power vested in it; a liberty to follow [one's] own will in all things, when the rule prescribes not, and not to be subject to the inconstant, uncertain, unknown, arbitrary will of another. . . ." —John Locke, 1690 [tf001-1.jpg] According to John Locke, people are obligated to obey their government.

3. “First, the powers of governing still remaining in the hands of the king, he will have a negative over the whole legislation on this continent. And as he has shown himself such an inveterate enemy to liberty and discovered such a thirst for arbitrary power, is he, or is he not, a proper person to say to these colonies. ‘You shall make no laws but what I please!’” —Thomas Paine (t0003-1.jpg) According to Thomas Paine, the colonists should break away from England and create their own monarchy.

5. [nar004-1.jpg] [tf005-1.jpg] Congress and the government were allowed to amend the Articles of Confederation with the consent of 10 states.

41. "[B]ut now at length I have the hap
Franklin remarked that during the long
setting. According to Benjamin Franklin

- Click Continue to finish the import process

- | | | Question | Created by | Last modified by |
|--|--|---|------------------------|------------------------|
| | | | First name / Last name | First name / Last name |
| | | q35 Critical Thinking Determining Cause and Effect Explain why a peace | Kalin Wilburn | Kalin Wilburn |
| | | q36 Critical Thinking Identifying Central Issues Explain why many Amer | Kalin Wilburn | Kalin Wilburn |
| | | q37 Understanding Concepts Growth of Democracy How does the Decl | Kalin Wilburn | Kalin Wilburn |
| | | q38 Understanding Concepts Civil Liberties Explain how the Bill of Righ | Kalin Wilburn | Kalin Wilburn |
| | | q39 Understanding Concepts Growth of Democracy By modern standar | Kalin Wilburn | Kalin Wilburn |
| | | q40 We hold these truths to be self-evident, that all men are created equ | Kalin Wilburn | Kalin Wilburn |
| | | q41 [B]ut now at length I have the happiness to know . . . it is a rising a | Kalin Wilburn | Kalin Wilburn |
| | | q33 Match each item with the correct statement below. | Kalin Wilburn | Kalin Wilburn |
| | | q34 Match each item with the correct statement below. | Kalin Wilburn | Kalin Wilburn |
| | | q08 This political philosopher wrote that people had a natural right to lif | Kalin Wilburn | Kalin Wilburn |
| | | q09 Signed in 1620 by the Pilgrims, this colonial plan for self-rule is calle | Kalin Wilburn | Kalin Wilburn |
| | | q10 The first battles of the Revolutionary War were fought at | Kalin Wilburn | Kalin Wilburn |
| | | q11 The Intolerable Acts prompted the colonists to take this action agai | Kalin Wilburn | Kalin Wilburn |
| | | q12 Many Americans wanted a strong national government after | Kalin Wilburn | Kalin Wilburn |
| | | q13 The compromise made by the delegates to the Constitutional Conve | Kalin Wilburn | Kalin Wilburn |
| | | q14 To establish the Northwest Territory, states had to | Kalin Wilburn | Kalin Wilburn |
| | | q15 Federalists were concerned that without a strong national governme | Kalin Wilburn | Kalin Wilburn |
| | | q16 Anti-Federalists believed this was needed. | Kalin Wilburn | Kalin Wilburn |
| | | q17 Study the map. Which colony established the House of Burgesses? | Kalin Wilburn | Kalin Wilburn |
| | | q18 There were five Southern Colonies. Study the map to determine the | Kalin Wilburn | Kalin Wilburn |